

CASE STUDY #23-140

Harrington Apartments



Date:	July – October 2023
Duration:	4 months
Value:	\$0.4M
Project Name:	Harrington Apartments
Project Address:	Prospect Road Prospect
Project Scope:	Civil and Earth Works



Kalkan's expertise and dedication were instrumental in the success of our complex renovation project. They consistently exceeded our expectations and delivered a truly exceptional result. We are incredibly grateful for their partnership.

THE CLIENT

PROJECT OVERVIEW

The project encompasses detailed excavation work for various critical components. This includes the excavation of a new sewer pump station and sewer line, a new stormwater system, lift shafts, and in-situ concrete footings. In total, we will be removing approximately 1500 tonnes of soil throughout the project.

SCOPE OF WORKS

The Harrington Apartments project entailed an extensive excavation process, focusing on the following key components:

Excavation of New Sewer Pump Station and Sewer Line:

The project involved meticulous excavation for the installation of a new sewer pump station and sewer line. This crucial step ensured proper sewage management for the apartment complex.

Stormwater System Excavation:

Detailed excavation work was carried out to facilitate the establishment of a new stormwater system. This entailed the creation of trenches and channels to manage rainwater effectively, preventing flooding and ensuring the safety and integrity of the property.

Lift Shaft Excavation:

Excavation for the construction of lift shafts was an integral part of the project. This involved precise digging and groundwork to accommodate the vertical transportation system within the building, enhancing accessibility for residents.

Insitu Concrete Footings Excavation:

To ensure the stability and structural integrity of the building, extensive excavation was conducted for insitu concrete footings. These footings provided a solid foundation for the entire apartment complex.

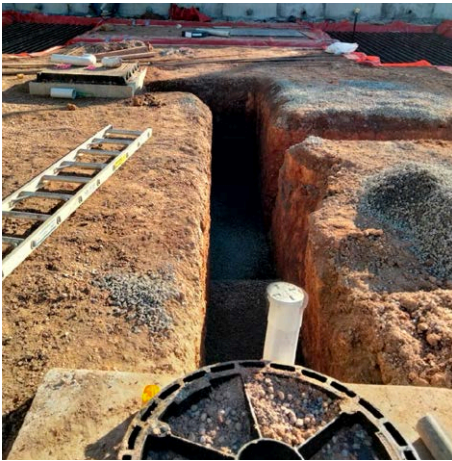
CHALLENGES AND SOLUTIONS:

Site Conditions: Dealing with various soil types and conditions often requires adaptable excavation methods and the use of appropriate equipment.

Environmental Considerations: Ensuring proper disposal or treatment of excavated materials in accordance with environmental regulations to minimize the project's impact on the surroundings.

Safety Measures: The project would have included the implementation of safety protocols to protect workers during excavation, particularly in areas with heavy machinery and potential hazards.

Project Timeline: Efficient planning and execution to meet project timelines, as delays in excavation can impact the overall construction schedule and budget.



CONCLUSION

This comprehensive case study highlights the successful completion of detailed excavation work for the Harrington Apartments project, emphasizing the critical role of excavation in preparing the site for further construction. The project showcases the ability to manage and execute excavation tasks efficiently and safely, which are essential aspects of any construction project.



Civil Engineering
Demolition
Land Division
Underground Infrastructure

Phone: 0449 555 677
PO Box 1024 Pasadena SA 5042
admin@kalkan.com.au
www.kalkan.com.au